

EdgeRater and HGIS Integration



Disclaimer

- ❖ This session is for educational purposes only. All trading involves risk and you are solely responsible for any trading activity that you undertake at all times.
- ❖ Historical stock market performance is no indication of future results.

Who is this webinar for?

- ❖ HGSI/EdgeRater users looking for interoperability information
- ❖ EdgeRater users who want to find out more about the capabilities of the program
- ❖ Anybody interested in trading/investing – there are some gems for you too!

Outline

Part 1:

❖ Chris White (EdgeRater)

❖ Overview of Integration points between EdgeRater and HGSI

Part 2:

❖ Ron Brown (HGSI)

❖ Backtesting strategies in EdgeRater using Elder's Force Index

Part 3:

❖ Ian Woodward (HGSI)

❖ %B buckets for detection of market conditions and extremes

Part 1

Chris White

Overview of EdgeRater and HGSI integration

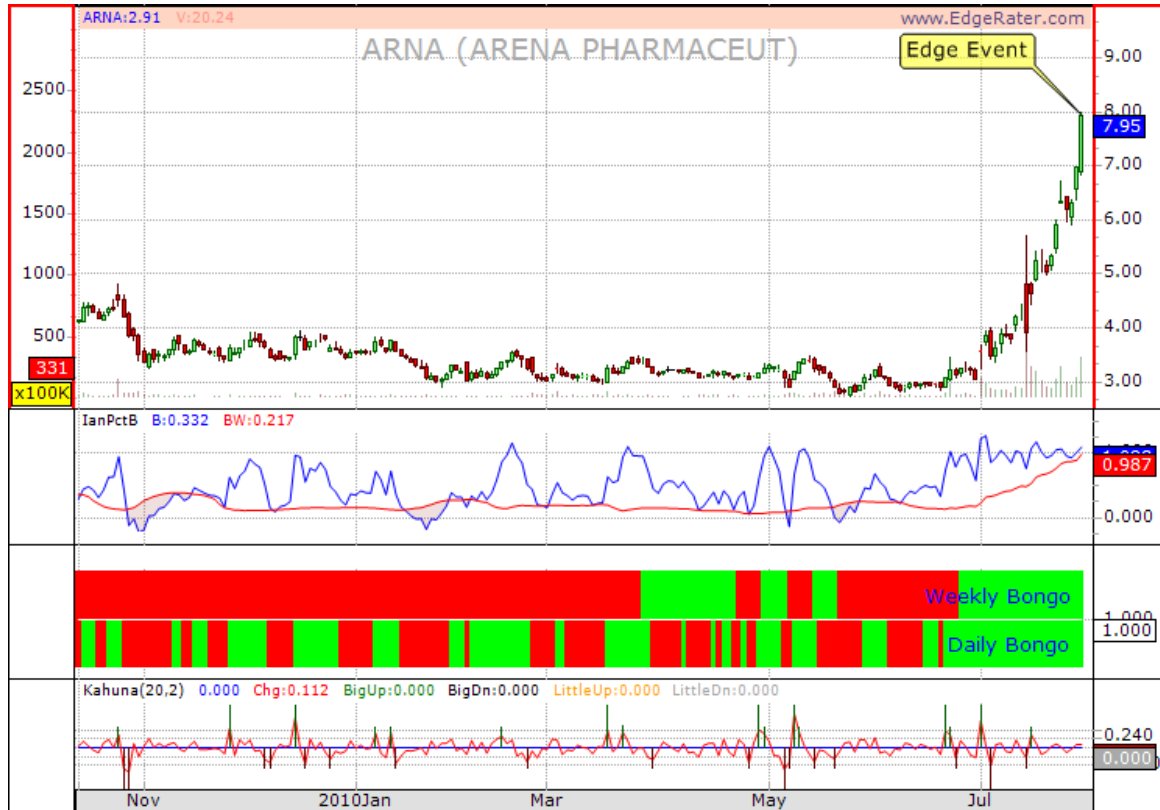
HGSI Groups

- ❖ Export HGSI Groups to EdgeRater Lists

 - ❖ Video: <http://www.edgerater.com/Videos/hgsigroupexport.aspx>

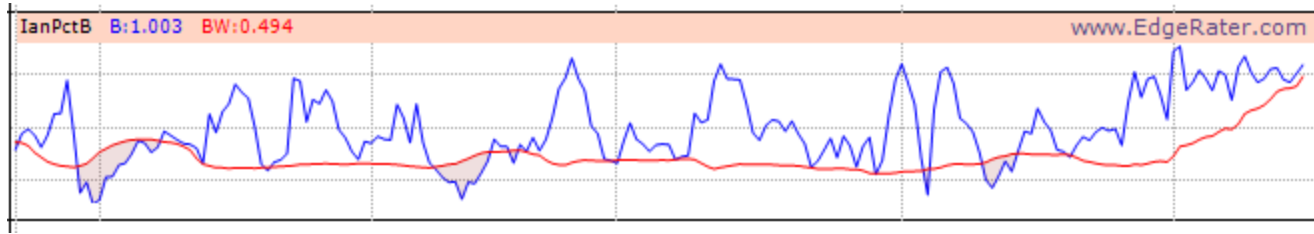
- ❖ Export HGSI Groups to EdgeRater MetaStock Folders

Indicators (HGSI)

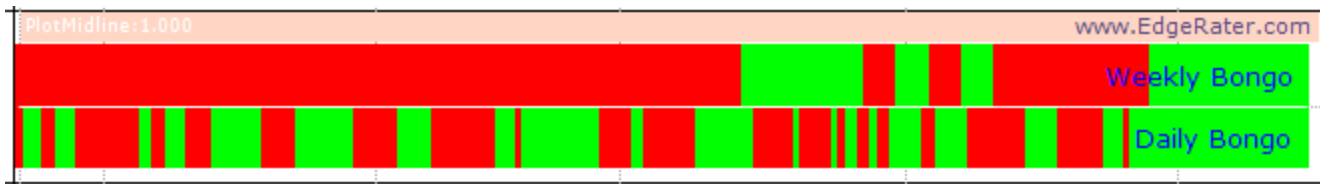


Indicators (Cont'd)

- ❖ Ian %B (%B and Bandwidth plotted together showing crosses)

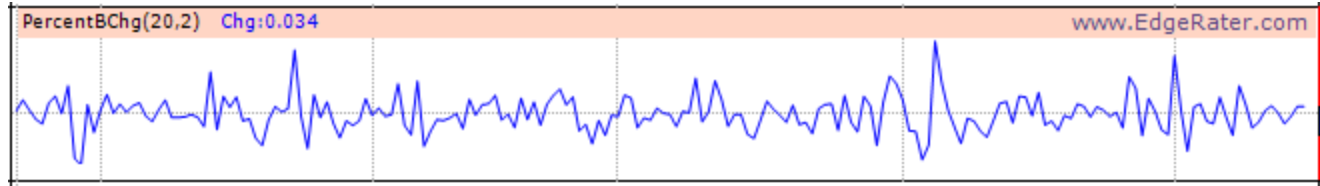


- ❖ Bongo (Weekly/Daily)

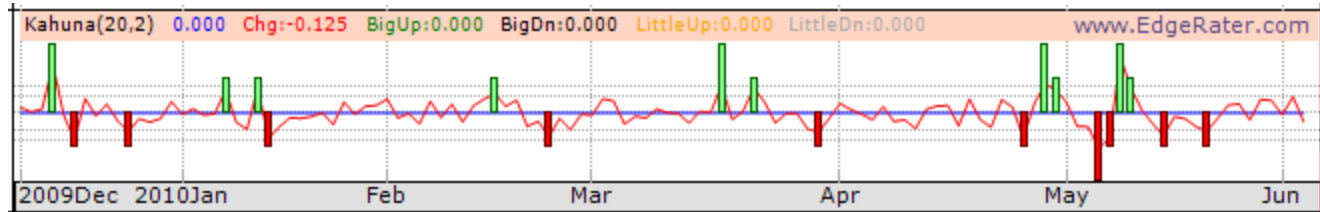


Indicators (Cont'd)

❖ %B 1-Day Change



❖ Kahuna



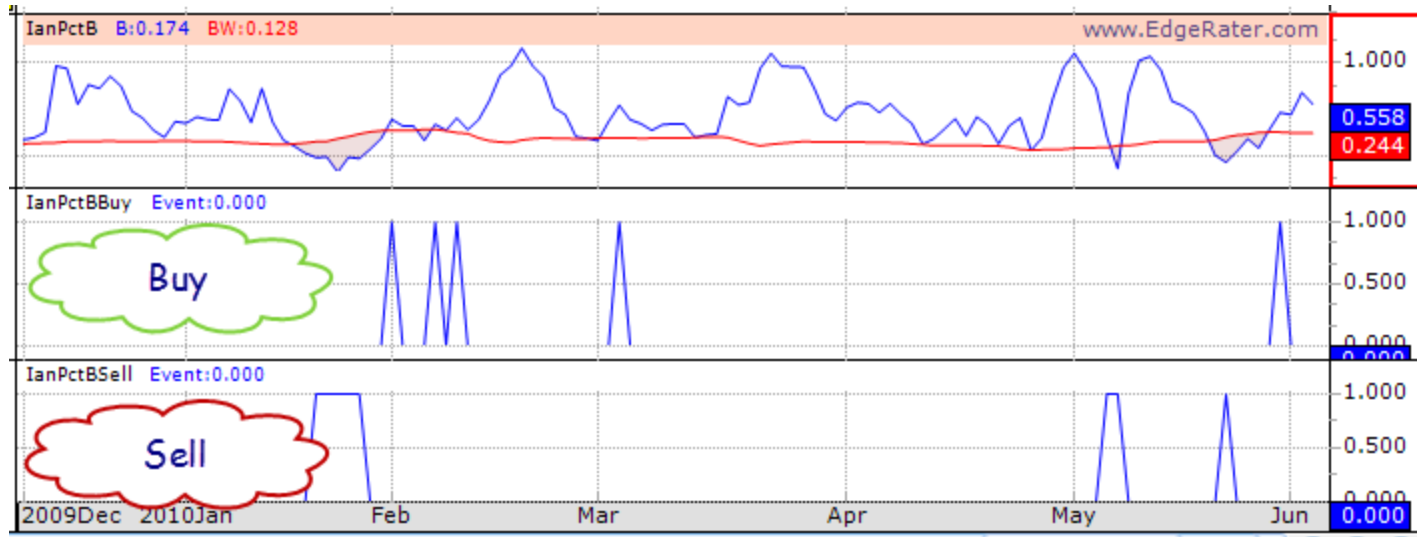
❖ + over 150 other indicators

Scans

- ❖ Bongo Daily Up
- ❖ Bongo Daily Down
- ❖ Bongo Weekly Up
- ❖ Bongo Weekly Down

Scans (Cont'd)

❖ Ian Woodward's %B Buy and Sell system



Scan's (Cont'd)

- ❖ Suite of Ron's Force Index Scans
 - ❖ Force 13 crossing negative
 - ❖ Force 2 Negative , Force 13 positive
 - ❖ Force 2 and 13 cross positive within 5 bars...
 - ❖ ...+ 6 others

Ian's new work...

- ❖ %B bucketing
- ❖ Heat Maps
- ❖ %B ratios or counts
- ❖ Brand new indicator
 - ❖ To be released in EdgeRater this week!

Alpha 21 Ranking*

❖ Weightings

- ❖ 5 Day % Chg Weight – 1 (25%) [Actual Allocation – 40%]
- ❖ 10 Day %Chg Weight – 1 (25%) [Actual Allocation – 30%]
- ❖ 15 Day % Chg Weight – 1 (25%) [Actual Allocation – 20%]
- ❖ 21 Day % Chg Weight – 1 (25%) [Actual Allocation – 10%]

*From Norm Black's **Alpha21-Rules for HGSI.pdf** in HGSI documents folder

Enrg-Solar				View: Alpha 21 Trading System vs. SP500			
	Name	Symb	R	8/2/2010	% Pr Ch 1-Dy	1-Dy Ch vs. S&P 500	5-Dy Ch vs. S&P 500
1	SOLARFUN POWER HOLDINGS CO L	SOLF	76.00	SOLF,76	8.4%	1.06	0.99
2	AKEENA SOLAR INC	WEST	75.00	WEST,75	2.4%	1.00	1.01
3	CHINA SUNERGY CO. LTD.	CSUN	71.00	CSUN,71	2.5%	1.00	1.00
4	GT SOLAR INTERNATIONAL INC	SOLR	69.00	SOLR,69	5.9%	1.04	1.02
5	LDK SOLAR CO. LTD.	LDK	68.00	LDK,68	3.1%	1.01	0.98
6	ENERGY CONVERSION DEVICES IN	ENER	67.00	ENER,67	5.8%	1.04	0.96
7	ASCENT SOLAR TECHNOLOGIES IN	ASTI	65.00	ASTI,65	4.8%	1.03	0.98
8	SPIRE CORP	SPIR	64.00	SPIR,64	0.3%	0.98	1.04
9	RENESOLA LTD.	SOL	54.00	SOL,54	4.5%	1.02	0.96
10	JA SOLAR HOLDINGS CO LTD	JASO	46.00	JASO,46	3.9%	1.02	0.94
11	ASCENT SOLAR TECHNOLOGIES IN	ASTIZ	45.00	ASTIZ,45	20.0%	1.17	0.96
12	Enrg-Solar Index	INDEX	43.00	INDEXiko,4	3.7%	1.01	0.93
13	CANADIAN SOLAR INC	CSIQ	42.00	CSIQ,42	2.6%	1.00	0.89
14	CHINA TECH DEVELOPMENT GP CO	CTDC	40.00	CTDC,40	0.0%	0.98	0.99
15	TRINA SOLAR LTD	TSL	35.00	TSL,35	2.1%	1.00	0.91
16	SUNPOWER CORP	SPWRB	31.00	SPWRB,31	4.1%	1.02	0.97
17	YINGLI GREEN ENERGY HOLDING	YGE	25.00	YGE,25	4.5%	1.02	0.91
18	EVERGREEN SOLAR INC	ESLR	24.00	ESLR,24	1.5%	0.99	0.92
19	SUNPOWER CORP	SPWRA	24.00	SPWRA,24	4.3%	1.02	0.96
20	SUNTECH PWR HLDGS CO LTD	STP	21.00	STP,21	2.3%	1.00	0.92
21	FIRST SOLAR INC	FSLR	20.00	FSLR,20	0.6%	0.98	0.90
22	REAL GOODS SOLAR INC	RSOL	7.00	RSOL,7	0.4%	0.98	0.90

Alpha 21 Example

HGSI Warehouse view

	AAU	AAV	AAW	AAX	AAZ	AAZ	ABA	ABB	ABC	ABD	ABE	ABF	ABG
1	7/15/2010	7/16/2010	7/19/2010	7/20/2010	7/21/2010	7/22/2010	7/23/2010	7/26/2010	7/27/2010	7/28/2010	7/29/2010	7/30/2010	8/2/2010
2	JASO,85	JASO,85	JASO,81	TSL,82	SOLF,84	SOLF,79	SOLF,80	SOLF,76	SOLF,77	SOLF,82	SOLF,84	WEST,78	SOLF,76
3	CSIQ,83	TSL,82	TSL,81	SOLF,79	JASO,77	TSL,78	WEST,73	CSIQ,73	CSUN,69	CSUN,69	CSUN,73	LDK,76	WEST,75
4	TSL,77	CSIQ,79	SOLF,77	JASO,77	WEST,76	CSIQ,71	TSL,72	ENER,70	CSIQ,65	LDK,65	WEST,71	CSUN,75	CSUN,71
5	INDEXiko,7	INDEXiko,7	CSIQ,76	SOL,77	TSL,75	WEST,70	CSIQ,71	LDK,66	ENER,65	ASTIZ,64	LDK,69	SOLF,66	SOLR,69
6	SOL,66	SOL,65	WEST,74	WEST,76	CSIQ,74	CSUN,67	CSUN,66	TSL,65	SOL,62	ENER,63	SOL,66	SPIR,66	LDK,68
7	SOLF,65	SOLF,64	INDEXiko,6	CSIQ,72	SOL,68	JASO,66	LDK,63	WEST,63	LDK,59	WEST,61	ENER,65	SOLR,63	ENER,67
8	YGE,60	WEST,62	SOL,67	INDEXiko,6	INDEXiko,6	SOL,65	SOL,61	SOL,59	WEST,59	TSL,53	ASTIZ,58	SOL,60	ASTI,65
9	SOLR,54	FSLR,57	STP,60	FSLR,56	LDK,61	LDK,64	INDEXiko,6	INDEXiko,5	SOLR,57	SOL,52	INDEXiko,5	ENER,59	SPIR,64
10	STP,54	YGE,57	FSLR,57	YGE,56	CSUN,59	INDEXiko,6	SOLR,58	CSUN,57	TSL,57	ASTI,50	CSIQ,51	ASTI,54	SOL,54
11	FSLR,53	STP,55	YGE,51	STP,51	FSLR,54	FSLR,52	JASO,55	JASO,57	ASTI,55	INDEXiko,5	FSLR,50	JASO,49	JASO,46
12	LDK,51	LDK,50	LDK,43	LDK,46	YGE,48	YGE,46	ENER,53	SOLR,54	INDEXiko,5	JASO,49	SOLR,50	TSL,48	ASTIZ,45
13	SPWRB,42	SOLR,48	SOLR,41	CSUN,43	STP,42	ASTI,44	ASTI,51	ASTI,49	FSLR,49	FSLR,48	ASTI,47	CTDC,46	INDEXiko,4
14	WEST,42	SPWRB,43	SPWRB,40	SOLR,39	SOLR,37	SOLR,39	ASTIZ,43	FSLR,40	JASO,43	CSIQ,47	TSL,46	CSIQ,45	CSIQ,42
15	ENER,40	ENER,34	CSUN,39	SPWRB,36	ASTI,33	STP,35	FSLR,43	YGE,38	ASTIZ,38	SOLR,45	JASO,43	INDEXiko,4	CTDC,40
16	SPIR,38	SPWRA,32	ENER,36	ENER,30	ENER,33	ENER,29	YGE,42	SPIR,33	STP,33	ESLR,38	ESLR,36	SPWRB,35	TSL,35
17	SPWRA,37	SPIR,24	SPWRA,31	SPIR,28	SPIR,25	SPWRA,28	STP,32	STP,33	ESLR,29	STP,28	CTDC,32	FSLR,33	SPWRB,31
18	ESLR,26	CSUN,23	ESLR,20	SPWRA,27	SPWRB,25	SPWRB,28	SPIR,23	ASTIZ,32	CTDC,27	YGE,27	SPIR,32	ESLR,31	YGE,25
19	CSUN,23	ASTI,17	ASTI,17	ASTI,25	SPWRA,20	SPIR,25	CTDC,15	ESLR,31	SPIR,27	SPIR,26	STP,24	STP,24	ESLR,24
20	ASTIZ,18	CTDC,17	SPIR,17	ESLR,15	ESLR,17	ASTIZ,23	SPWRB,15	SPWRB,17	SPWRB,24	CTDC,25	YGE,22	SPWRA,20	SPWRA,24
21	RSOL,12	ESLR,17	CTDC,16	RSOL,15	RSOL,14	CTDC,21	SPWRA,13	CTDC,16	YGE,24	SPWRB,25	RSOL,18	YGE,20	STP,21
22	ASTI,11	ASTIZ,16	RSOL,12	CTDC,10	CTDC,13	ESLR,11	RSOL,12	SPWRA,13	RSOL,21	RSOL,23	SPWRB,14	RSOL,15	FSLR,20
23	CTDC,5	RSOL,15	ASTIZ,9	ASTIZ,6	ASTIZ,12	RSOL,8	ESLR,11	RSOL,12	SPWRA,18	SPWRA,22	SPWRA,9	ASTIZ,6	RSOL,7

Daily Ranking with Highlighting

See how the ranking has changed day by day

Demo – Alpha 21 Ranking

Part 2

Ron Brown

Backtesting strategies using Elder's Force Index

Part 3

Ian Woodward

%B buckets for detection of market conditions and extremes

Resources

❖ EdgeRater Documentation:

<http://www.edgerater.com/documentation/nethelp/default.htm>

❖ Chris White's Blog

<http://www.chriswhiteblog.com>

❖ Ron Brown's Weekly Movies

<http://www.highgrowthstock.com/WeeklyReports>

❖ Ian Woodward's investing blog

<http://www.highgrowthstock.com/IanBlog/>